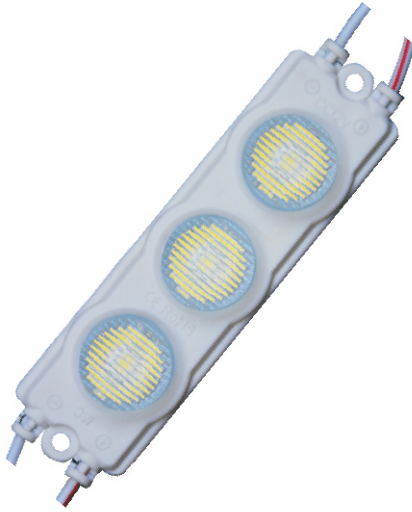
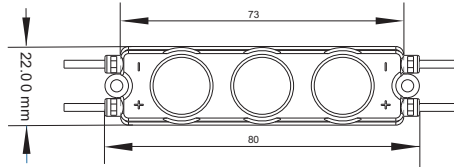


## ALED8022-3030-2050 DL Technical specifications



### PRODUCT FEATURES :

- Material and technology : Using ultra bright 3030 quality Chip, Using MCPCB Plastic injection process, metal backing, good for heat dissipation
- Lighting Beam Spread : Light angle 50° x 20°, uniform colour
- Lumen depreciation : Good depreciation, no more than 5% after 50,000h
- Electrical safety : Use with AUSLED recommended 12v power supplies
- Installation : 3M tape backing strip on each module, ultra thin design
- Usage : Edge Lite Light Boxes, Advertising Signs, halo effect lighting, interior decoration etc

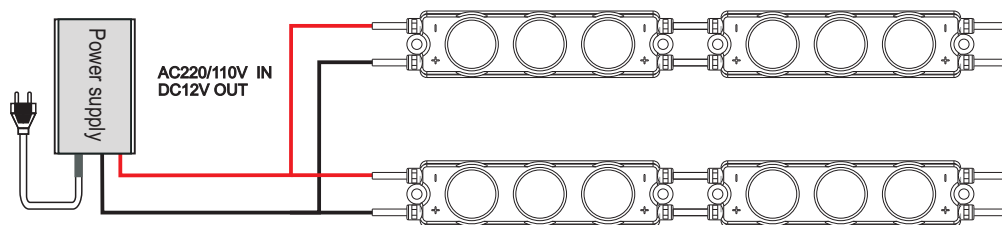


dimension diagram (unit:mm)

### PRODUCT PARAMETER :

|                        |                                      |
|------------------------|--------------------------------------|
| Power:                 | 3W pcs                               |
| Input voltage :        | DC12V                                |
| Waterproof rate :      | I P 67                               |
| Size :                 | 80mm*22mm*10mm                       |
| LM:                    | 230-250 lm/pcs                       |
| Led quantity/pcs :     | 3 led                                |
| Module quantity/String | 20 pcs/String                        |
| Color for choice :     | 6500k                                |
| View angle:            | Wide angle 50°x narrow spot beam 20° |

### POWER SUPPLY INSTALLATION INSTRUCTION:



- Power supply : 12v constant voltage
- Power supply recommendations : 1 power feed for each string of 20 modules, maximum feed = 60 watts / 5 Amps
- power supply connection : positive + Red and negtive - White, do not reverse polarity
- Strip cutting: Can cut anywhere between modules, any length cutting for the pcs

### PRODUCT MODEL:

| Model          | color | working voltage | working current | power  | view angle | led quantity/String | size(mm) | package    | waterproof for choice |
|----------------|-------|-----------------|-----------------|--------|------------|---------------------|----------|------------|-----------------------|
| ALED8022-3030W | 6500K | DC 12V          | 0.25 A/pcs      | 3W pcs | 50° * 20°  | 60LED               | 80*22*10 | 20pcs/pack | I P 67                |