

Make LED lighting choices with your customer's buying motives in mind!™



CHANNEL LETTER LED MODULES

Installation Instructions for MegaWhite, Right Light & Tadpole Series

"As Easy As It Gets!"

1. LAYOUT THE MODULES LIKE NEON, ONLY WITHOUT DOUBLE-BACKS APPROXIMATELY 2-4 PER FOOT, DEPENDING ON THE MODULE TYPE (See Figure 1 for spacing modules Center-Center). BE SURE TO TEST YOUR FIRST LETTER TO MAKE SURE YOU ARE SATISFIED BEFORE PROCEEDING.

2. INSTALL LENGTH OF PRODUCT IN LETTERS BY FASTENING MOUNTING CLIPS WITH VHB TAPE (SUPPLIED) OR MECHANICALLY THROUGH HOLES IN THE CLIP, OR BOTH. ADD SILICONE FOR ADDITIONAL SECURITY IF DESIRED.

3. CONNECT SEPARATE RUNS OF PRODUCT WITHIN A LETTER USING 6", 12" OR 24" JUMPER WIRES WITH PRE-CRIMPED CONNECTORS AS REQUIRED. THESE WIRES ARE AVAILABLE IN TWO COLORS, BLUE FOR NEGATIVE & RED FOR POSITIVE. SIMPLY CONNECT ONE NEGATIVE TAB AT THE END OF ANY MODULE ON ONE RUN TO A NEGATIVE TAB AT THE END OF ANY MODULE ON THE SECOND RUN. THEN REPEAT PROCESS CONNECTING A POSITIVE TAB ON ONE RUN TO A POSITIVE TAB ON THE OTHER. (See Figure 3 and Figure 4)

4. 36" JUMPER WIRES WITH CLASS 2 WIRE CAN BE USED TO CONNECT MODULES FROM LETTER TO LETTER AS WELL. ALL RUNS THRU A WALL MUST EITHER BE IN A CONDUIT OR "PASS-THRU" OR BE MADE WITH CLASS 2 WIRE. LIMIT THE TOTAL NUMBER OF MODULES PER RUN TO 1/3 OF THE TOTAL POWER SUPPLY (PS) LOAD. THIS WILL INCREASE YOUR LOAD BALANCE & LIGHT UNIFORMITY. FOR EXAMPLE: USING THE MEGAWHITE PLUS ON A 60W PS, YOU WOULD LIMIT THE TOTAL NUMBER OF MODULES ON EACH RUN TO 16 AND CONNECT AT THE MIDPOINT. SEE THE LOADING PER PS FOR ALL PRODUCTS ON THE REVERSE SIDE.

5. ALTHOUGH JUMPS CAN BE MADE FROM LETTER TO LETTER & THEN FROM THE FINAL LETTER TO THE POWER SOURCE, THE PREFERRED METHOD IS TO RUN EACH LETTER TO THE POWER SOURCE. THE SECONDARY WIRES ON THE POWER SOURCES ARE COLOR COORDINATED BLUE FOR NEGATIVE & RED FOR POSITIVE (OLDER PRODUCTS USED BLACK FOR NEGATIVE AND YELLOW FOR POSITIVE).

Figure 1

Product Series	Approx. Center-Center
MegaWhite	6"
Right Light	4"-5"
Tadpole	3"

Figure 2

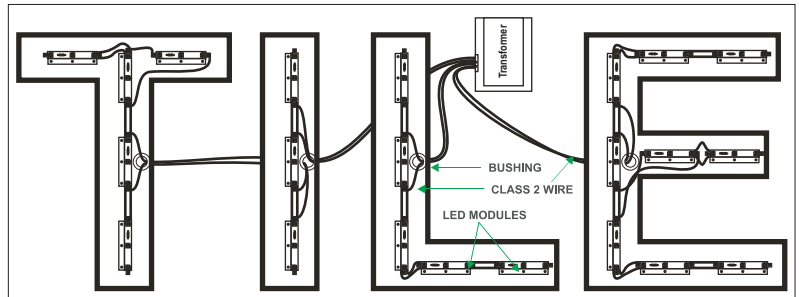


Figure 3

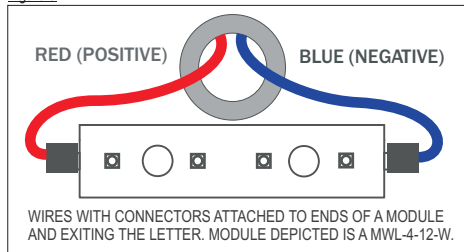


Figure 5

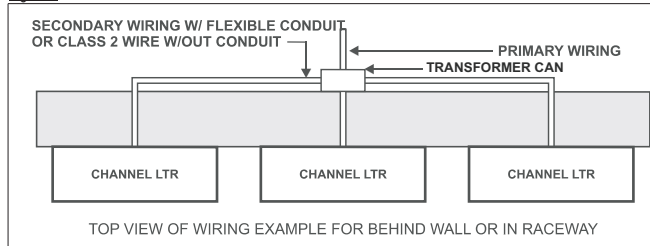
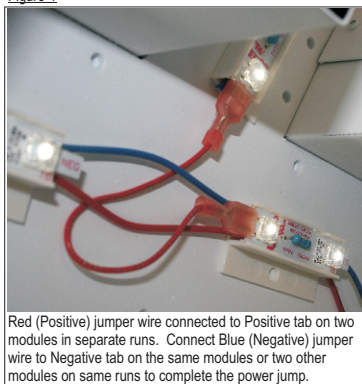
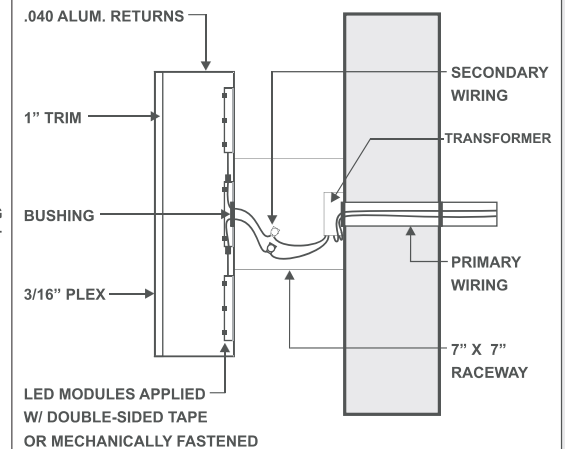
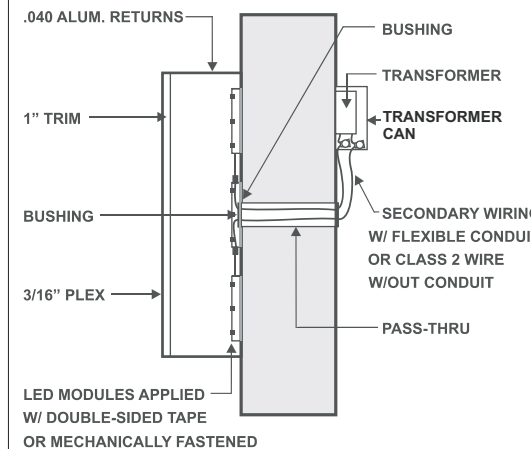


Figure 4



Red (Positive) jumper wire connected to Positive tab on two modules in separate runs. Connect Blue (Negative) jumper wire to Negative tab on the same modules or two other modules on same runs to complete the power jump.



Designed with
the sign company
and the end user
in mind.™

USLED
1800 Bering Dr.
Houston, TX 77057

TOLL-FREE
866.972.9191
713.972.9191
713.972.9393 FAX

www.usled.com



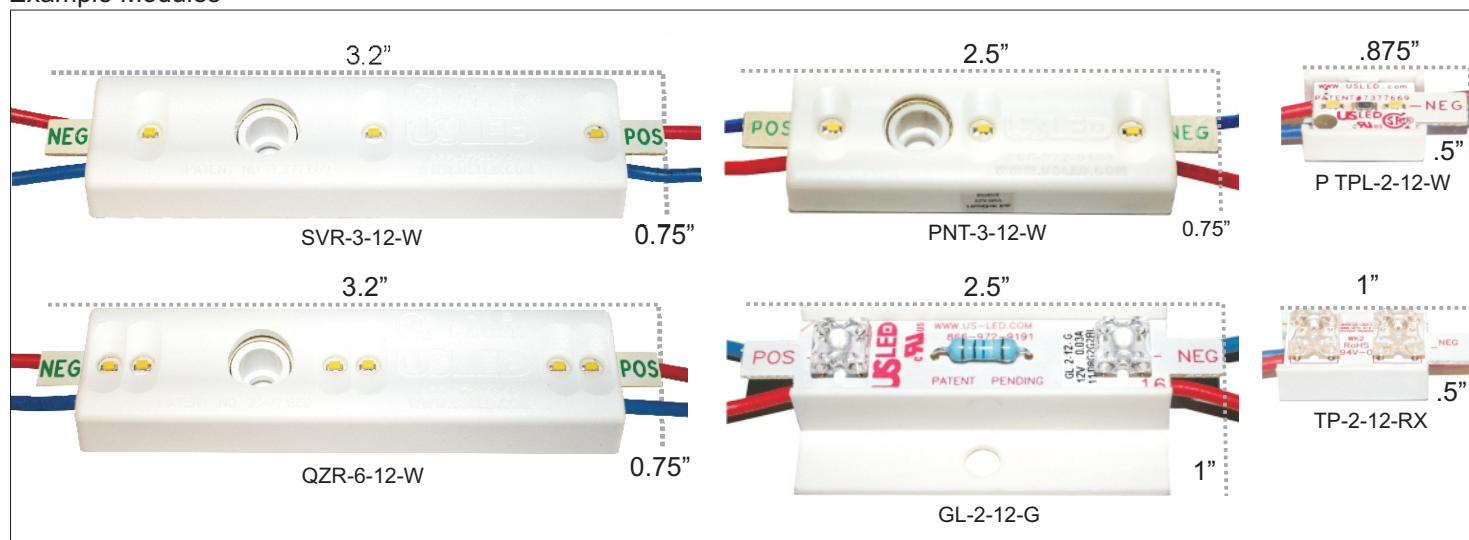
CHANNEL LETTER LED MODULES – Installation Instructions (Page 2)

Right Light Series	LED Per Module	Module Per Ft	Product Family	Color	Light Angle	Power (W / Ft.)	Load 12W		Load 60W	
							Min.	Max.	Min.	Max.
RLS-2-12-RX	2	3	Right Light	Red	110°	2.16	1 Ft. (0.3m)	5 Ft. (1.52m)	5 Ft. (1.52m)	27 Ft. (8.23m)
P SVR-2-12-RX	2	3	Plus	Red	110°	1.15	2 Ft. (0.61m)	10 Ft. (3.05m)	9 Ft. (2.74m)	52 Ft. (15.85m)
RLS-3-12-RX	3	2	Right Light	Red	110°	1.44	2 Ft. (0.61m)	8 Ft. (2.44m)	7 Ft. (2.13m)	41 Ft. (12.5m)
P SVR-3-12-RX	3	2	Plus	Red	110°	0.77	3 Ft. (0.91m)	15 Ft. (4.57m)	14 Ft. (4.27m)	78 Ft. (23.77m)
RLS-2-12-O	2	3	Lightning	Orange	120°	1.80	2 Ft. (0.61m)	6 Ft. (1.83m)	6 Ft. (1.83m)	33 Ft. (10.06m)
RLS-3-12-O	3	2	Lightning	Orange	120°	1.20	2 Ft. (0.61m)	10 Ft. (3.05m)	9 Ft. (2.74m)	50 Ft. (15.24m)
RLS-2-12-Y	2	3	Lightning	Yellow	120°	1.80	2 Ft. (0.61m)	6 Ft. (1.83m)	6 Ft. (1.83m)	33 Ft. (10.06m)
GL-2-12-G	2	3	Lightning	Green	100°	1.08	2 Ft. (0.61m)	11 Ft. (3.35m)	10 Ft. (3.05m)	55 Ft. (16.76m)
BL-2-12-B	2	3	Lightning	Blue	100°	1.08	2 Ft. (0.61m)	11 Ft. (3.35m)	10 Ft. (3.05m)	55 Ft. (16.76m)
PNT-3-12-W	3	3	Point	White	140°	1.08	2 Ft. (0.61m)	11 Ft. (3.35m)	10 Ft. (3.05m)	55 Ft. (16.76m)
SVR-3-12-W	3	2	Saver	White	140°	0.72	3 Ft. (0.91m)	16 Ft. (4.88m)	14 Ft. (4.27m)	83 Ft. (25.3m)

Tadpole Series	LED Per Module	Module Per Ft	Product Family	Color	Light Angle	Power (W / Ft.)	Load 12W		Load 60W	
							Min.	Max.	Min.	Max.
TP-2-12-RX	2	4	Tadpole	Red	110°	2.88	1 Ft. (0.3m)	4 Ft. (1.22m)	4 Ft. (1.22m)	20 Ft. (6.1m)
TP-2-12-O	2	4	Lightning	Orange	120°	2.88	1 Ft. (0.3m)	4 Ft. (1.22m)	4 Ft. (1.22m)	20 Ft. (6.1m)
TPL-2-12-G	2	4	Lightning	Green	100°	1.44	2 Ft. (0.61m)	8 Ft. (2.44m)	7 Ft. (2.13m)	41 Ft. (12.5m)
TPL-2-12-B	2	4	Lightning	Blue	100°	1.44	2 Ft. (0.61m)	8 Ft. (2.44m)	7 Ft. (2.13m)	41 Ft. (12.5m)
P TPL-2-12-W	2	4	Plus	White	180°	1.20	2 Ft. (0.61m)	10 Ft. (3.05m)	9 Ft. (2.74m)	50 Ft. (15.24m)
P TPL-2-12-W	2	7	Plus	White	180°	2.10	1 Ft. (0.3m)	5 Ft. (1.52m)	5 Ft. (1.52m)	28 Ft. (8.53m)

MegaWhite Series	LED Per Module	Module Per Ft	Product Family	Color	Light Angle	Power (W / Ft.)	Load 12W		Load 60W	
							Min.	Max.	Min.	Max.
P MWL -12-12-W	12	2	Plus	White	180°	2.40	1 Ft. (0.3m)	5 Ft. (1.52m)	5 Ft. (1.52m)	25 Ft. (7.62m)
QZR-6-12-W	6	2	Quasar	White	140°	1.44	2 Ft. (0.61m)	8 Ft. (2.44m)	7 Ft. (2.13m)	41 Ft. (12.5m)

Example Modules



TROUBLE SHOOTING GUIDE

© 2007 US LED LTD. Right Light, MegaWhite and Tadpole are trademarks of US LED, LTD.

SYMPTOM	POSSIBLE CAUSE	SOLUTION
A SINGLE MODULE NOT LIGHTING	MALFUNCTION ON MODULE	LEAVE MALFUNCTIONING MODULE IN PLACE. MOUNT REPLACEMENT MODULE ALONGSIDE & USING JUMPER WIRES, CONNECT THE POSITIVE TAB TO THE POSITIVE TAB OF ANY MODULE ON THE RUN. DO LIKEWISE WITH THE NEGATIVE TAB.
LEDS FLICKER	UNDERLOADED OR OVERLOADED MALFUNCTIONING POWER SOURCE	ADJUST LOADS ON POWER SOURCES. REPLACE POWER SOURCE.
ENTIRE PRODUCT RUN IS NOT LIGHTING	A. BAD WIRE CONNECTIONS.	A. RESTORE CONNECTION.
	B. IF ONLY ONE RUN OF PRODUCT ON POWER SOURCE,	B. CHECK POWER SOURCE & REPLACE IF APPROPRIATE.
	C. SHORT.	C. AN EASY WAY TO CHECK FOR A SHORT IS TO LIGHT THE LED RUN WITH A 9-VOLT BATTERY. THE RUN WILL NOT LIGHT IF IT IS SHORTED. IF THE POWER SOURCE IS OVERLOADED, THE RUN WILL STILL LIGHT, ONLY DIMMER.
	D. OVERLOAD.	D. CHECK THE LENGTH OF THE LED RUN & REMOVE ANY OVERLOAD. SEE CHART FOR MAXIMUM LOAD.

Designed with
the sign company
and the end user
in mind.™

USLED
1800 Bering Dr.
Houston, TX 77057

TOLL-FREE
866.972.9191
713.972.9191
713.972.9393 FAX

www.usled.com

